



FLINT RIVERQUARIUM  
ENVIRONMENTAL EDUCATION CENTER

# EDUCATIONAL PROGRAMS

Open Tuesday-Saturday 10 am-5 pm & Sunday 1 pm-5 pm.  
Groups may be able to arrange a visit outside of these hours and days.

The Flint RiverQuarium offers an aquatic educational experience like no other in South Georgia. Animal encounters, hands-on labs, interactive exhibits, and large-format science-based films offer your students a chance to get their hands wet and their minds engaged. And did we mention that the Flint River, Riverfront Park, and Turtle Grove Play Park are located right next door?

## Mix & Match Programs to Design Your Ideal Field Trip

1

### SELF-GUIDED AQUARIUM TOUR

Enjoy the aquarium at your own pace after an orientation by trained staff.

\$4.50 per student

2

### LABS

Labs are an extension of the science classroom with hands-on experiments. All labs are aligned with GA Performance Standards. 45 min.-1 hr.

\$4.50 per student

3

### IMAGINATION THEATER FILMS

Science comes alive in educational movies shown on our three-story tall screen. A rotation of nature-based films allows you to choose one that aligns with your curriculum.

\$4.50 per student

4

### PRE-SCHOOL PROGRAMS

Pollywogs & Puddles is our Pre-K introductory, sensory based science program. Classes are offered at both the Flint RiverQuarium & Thronateeska Heritage Center.

\$4.50 per student

## Frequently Asked Questions

### Are school group reservations required?

Yes! Due to seating limits and space constraints, advance reservations are required.

### What about lunch?

We do not offer lunch or have on-site dining facilities, but you may order delivery directly from Chick-fil-a. Students also are welcome to bring lunch and eat at Riverfront Park or Turtle Grove Play Park, both located adjacent to the Flint RiverQuarium.

## Flint RiverQuarium Souvenirs

If you don't have time to schedule a stop in our gift shop, purchase Flint Souvenir Packs in advance. Each pack costs \$2.00 and contains a variety of small items best suited for K-3rd grade. Please order Flint Packs at least one week in advance.



# FLINT RIVER QUARIUM

## ENVIRONMENTAL EDUCATION CENTER

# LABS

## PRE-K-5th GRADE

Labs are an extension of the science classroom with hands-on experiments and may include animal experiences. Our labs are aligned with Georgia Performance Standards. Each lab lasts 45 minutes-1 hour.

### All Grades

#### ***Herpetology***

This class is available for all grades and ages. We take a closer look at the differences between reptiles and amphibians and their importance to our environment, while giving students a close-up experience with some of our residents here at the RiverQuarium.

### Pre-K

#### ***Pollywogs & Puddles***

Designed to align with Pre-K curriculum standards, Pollywogs & Puddles is an introductory, sensory science program with classes offered at both the Flint RiverQuarium and Throneateska Heritage Center. Current class:

***Talks about Turtles:*** Discover the fascinating world of turtles, tortoises, and terrapins, oh my!

### Kindergarten

#### ***Amazing Animals***

This lab focuses on a variety of animals, comparing their features, colors, sizes, and habitats.

### First Grade

#### ***Needs of Life***

Students will learn about the four basic needs of life: water, air, food and shelter. This class has the option of either focusing on animals in the lab classroom, or on plants in our Golly Gee Garden.

### Second Grade

#### ***Life Cycles***

This class explores the life cycles of various animals found at the RiverQuarium through puzzles and activities.

### Third Grade

#### ***Habitats***

Students will learn about various animals' habitats and how they adapt in their ever-changing environments.

#### ***Water Conservation***

Students will look at the impact of our water footprints and how to conserve water in our everyday lives.

### Fourth Grade

#### ***Food Web***

This class focuses on various ecosystems, energy flow and how all life is connected through the food web.

#### ***Water Cycle***

This class gives students a better understanding of water by taking them on a journey through the water cycle.

### Fifth Grade

#### ***Classification***

This class focuses the classification of vertebrate and invertebrate groups and takes a closer look at animal characteristics, adaptations, and behaviors.



# FLINT RIVER QUARIUM

## ENVIRONMENTAL EDUCATION CENTER

# LABS

## 6th-12th GRADE

Labs are an extension of the science classroom with hands-on experiments and may include animal experiences. Our labs are aligned with Georgia Performance Standards. Each lab lasts 45 minutes-1 hour.

### All Grades

#### ***Herpetology***

This class is available for all grades and ages. It takes a closer look at the differences and importance of reptiles and amphibians and gives students a close up experiences with some of our residents here at the RiverQuarium.

### Middle School

#### ***Water Quality Control***

Students will perform Adopt-A-Stream standard water quality chemical tests on Flint River water samples and analyze their results.

#### ***Macroinvertebrate Mayhem***

Students will perform Adopt-A-Stream standard water quality biotic tests on macroinvertebrates found in the Flint River.

#### ***What's Up with Water***

This lab focuses on the structures and importance of aquifers and watersheds and demonstrates the effects of non-point and point source pollution.

#### ***Water Quality Field Day***

This option is an all-day, hands-on interpretive experience focusing on the Flint River water quality, watershed and ecosystems. Contact us for additional information.

#### ***Dissection***

Students will dissect and analyze an animal. Choose from a variety of animals, subject to availability. Contact the Education Curator for additional information and scheduling.

### High School

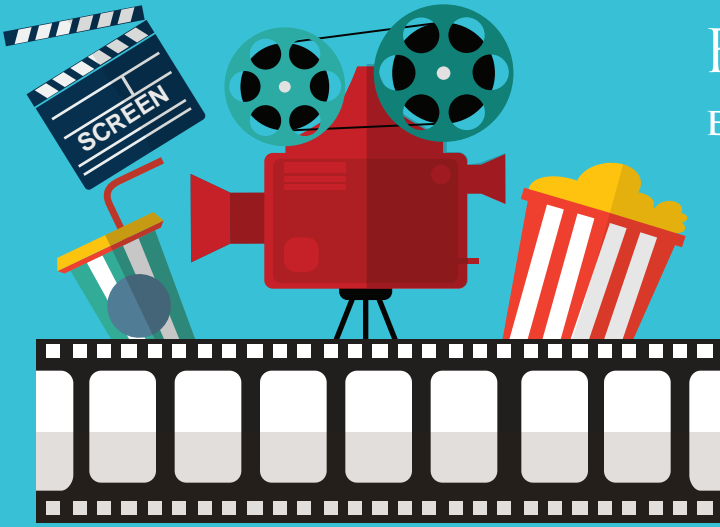
#### ***Water Wonders-Chemical***

Students will take an abiotic (chemical) survey of the Flint River water and learn how the happenings in a watershed affect the river flowing through it.

#### ***Water Wonders-Biological***

Students will take a biotic survey of the Flint River waters and learn what macroinvertebrates can tell us about water quality.

- \* Contact the Education Curator to customize a lab for your class according to your current curriculum. STEM programs encouraged!



FLINT RIVER QUARIUM  
ENVIRONMENTAL EDUCATION CENTER

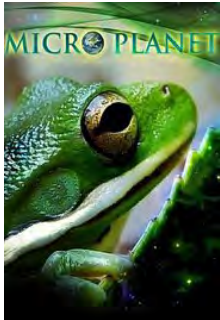
# IMAGINATION THEATER



## WATERMELON MAGIC

**38 minutes -- Best suited for Grades Pre-K-2nd**

Young audiences will delight in this nearly wordless film as they discover one of our most basic needs: healthy food. Follow along with Sylvie, the young daughter of a farmer, as she explores and learns the journey of watermelons—from seed to sale. As Sylvie and her watermelons near the end of their journey together, will she be able to let her baby watermelons go?



## MICRO PLANET

**33 minutes -- Best suited for Grades 1st-6th**

Stunning microfilming takes viewers on an unforgettable journey, giving a close up look at the tiny creatures of hidden ecosystems. Meet the thieves, assassins, and gentle souls that inhabit these secret kingdoms and worlds that thrive without us—and even in spite of us. A portion of this presentation was filmed at the Flint RiverQuarium during the summer of 2012.



## ALLIGATOR KINGDOM

**28 minutes -- Best suited for Grades 4th-12th**

Exploring Georgia's own Okefenokee Swamp, *Alligator Kingdom* educates viewers on the swamp's complex ecosystem and the vital role that this feared reptile plays. The filming and photography offer a look into the more remote and inaccessible areas of one of the last great black water swamps.

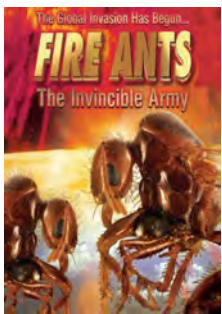
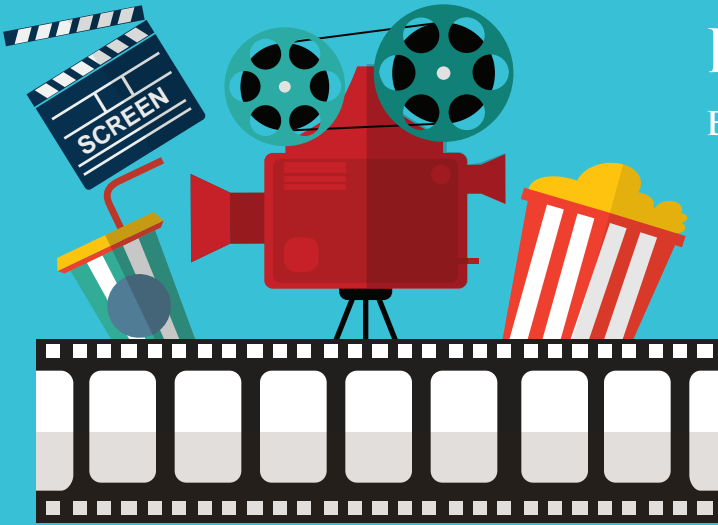


## KINGS OF BAJA

**46 minutes -- Best suited for Grades 6th-12th**

Travel the wondrous Baja Peninsula in Mexico as you watch *Kings of Baja*. There are few other places on the planet that are more forbidding and beautiful than this stunning ecosystem. Ten million years in the making and eight hundred miles long, it is home to a foreboding desert and a diverse sea filled with sea lions, manta rays, great white sharks and whales. *This film does contain references to evolution.*

# IMAGINATION THEATER



## FIRE ANTS

**36 minutes -- Best suited for Grades 5th-9th**

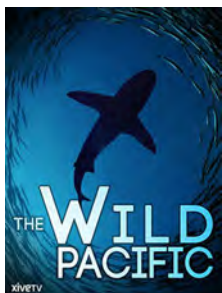
In the film *Fire Ants*, you will explore the secret world of the fire ant and the innovative research that is being done to stop their 80+ year invasion. Crop destruction, equipment repair, pest control and more have caused more than \$6 billion in damages. Now, scientists are cracking down on this ancient society and breeding winged assassins to hunt them down. You'll have to watch this movie to discover their plan of attack on this invasive species.



## PLASTIC PARADISE

**57 minutes -- Best suited for Grades 9th-12th**

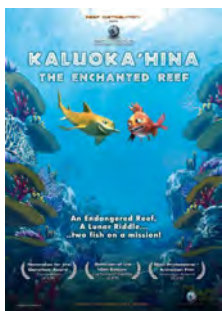
Join journalist and filmmaker Angela Sun in the movie *Plastic Paradise* as she journeys to the Great Pacific Garbage Patch and uncovers the mysteries of this remote phenomenon. Along with other researchers, she helps to shed some light on the effects that humanity's rabid plastic consumption is having on our global ecosystems. *This film contains graphic depictions of animal death and dissection.*



## WILD PACIFIC

**52 minutes -- Best suited for Grades 4th-12th**

Directed by Emmy-nominated Michael Watchulonis, *Wild Pacific* is a sumptuous exploration of the amazing wildlife that populates the eastern Pacific Ocean from Baja California to the Galapagos Islands. At very few places on Earth is biodiversity so readily observable – and so apparently critical to the overall ecological health of our planet.



## KALUOKA'HINA-THE ENCHANTED REEF

**33 minutes -- Best suited for Grades PreK-4th**

“Kaluoka’hina – The Enchanted Reef” offers a gripping story, is full of humor, and teaches us in a playful way to protect our environment. Kaluoka’hina, a gloriously colorful tropical reef, is under a spell: It is undiscoverable by men. Kaluoka’hina’s colorful inhabitants have thus always lived in peace, until the volcano erupts, and the spell is broken. Now it’s up to Shorty and Jake to restore the magic of Kaluoka’hina. Their only lead: the ancient legend that tells of touching the moon.

# THRONATEESKA HERITAGE CENTER

OUR PARTNER IN EDUCATION



Students can experience two field trips in one, with a special joint Flint RiverQuarium and Thronateeska package. A five-minute walk via the Riverfront Trail, Thronateeska Heritage Center is a collaborative partner with the Flint RiverQuarium on a wide variety of educational programming. When you book your reservation with the Flint RiverQuarium, you can also book a group visit to Thronateeska. Programs include a state-of-the-art planetarium and science museum, as well as a local history museum housed in the historic Albany Railway Depot.

The Riverfront Trail connects these two museums with an easy five-minute walk. Ample bus parking is available at both locations. For reservations or details, contact either organization.

## Two-in-One Field Trips!

Choose one activity from each location for \$9.00 (+ tax) per student

### FLINT RIVERQUARIUM

Choose one option:

- Self-guided RiverQuarium tour with orientation
- Educational movie at the Imagination Theater
- Lab: Standards-based, grade-appropriate classes led by Flint RiverQuarium educators
- Pollywogs & Puddles Pre-K program

Contact: 229-639-2650, [reservations@flinriverquarium.com](mailto:reservations@flinriverquarium.com)

### THRONATEESKA

Choose one option:

- Planetarium show
- Self-guided tour of interactive science museum & History & Mapping Museum
- Advanced learning lab in interactive science museum
- Pollywogs & Puddles Pre-K program

Contact: 229-432-6955, [museum@heritagecenter.org](mailto:museum@heritagecenter.org)

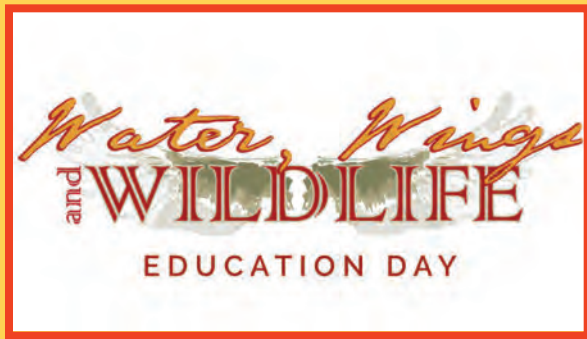
“ Each time we have visited we have been greeted by exceptional staff who have been friendly and answered any questions we had about the exhibits. There are a lot of hands-on exhibits which are appealing to the children. The colorful display provide information in a fun, but informative, way! ”

*Dougherty County teacher*



# TEACHER RESOURCES

## COMING UP AT THE FLINT RIVERQUARIUM



### Water, Wings & Wildlife Festival

School Day: Fri., September 25, 2020

Open to the Public: Sat., September 26, 2020

Make plans now to join us for our annual celebration of all creatures great and small. Friday will be dedicated to school groups, giving teachers an opportunity to share the educational enrichment provided by our presenters and exhibitors with their students. On Saturday, we open the festival to the public. Your students are sure to leave the Water, Wings & Wildlife Festival with a renewed appreciation for the Flint River and its native wildlife.

## Volunteer Opportunities

There are a variety of both long-term and short-term volunteer opportunities available at the Flint RiverQuarium. We especially welcome practicing and retired educators to share their expertise. Please speak with the Education Curator about ways that you might be able to share your skills and experience.

## OTHER OPPORTUNITIES

# Environmental Education Alliance of Georgia



Environmental Education Alliance of Georgia  
Annual Conference at Jekyll Island  
March 6 & 7, 2020

Are you creating an environmentally focused culture within your community? How do you find the best ways to make education accessible to everyone? What partnerships and stakeholders should environmental educators look to engage with in their communities? Share your expertise with formal and non-formal educators from around the southeast at the 2020 Environmental Education Alliance Annual Conference.

### Research Symposium - Friday, March 6, 2020

The Research Symposium is an opportunity for undergraduate, graduate, and professional researchers to share their projects with the EE community. Research symposium presentations should be related to either environmental education research or environmental science research.

### Concurrent Sessions - Saturday, March 7, 2020

The Annual Conference offers educators the connections, tools, learning opportunities, and strategies they need to understand and implement effective environmental education within their classrooms, schools, organizations, and communities. The theme for the 2020 Environmental Education Alliance Conference is "Splashing into EEA: Making Waves within Your Community." Share how you, your school, or your organization makes an impact in the community by making environmental education accessible to a diverse audience.

# SCHOOL GROUP RESERVATION FORM

FLINT RIVER  QUARIUM  
ENVIRONMENTAL EDUCATION CENTER

Organization Name: \_\_\_\_\_

Contact: \_\_\_\_\_ Email: \_\_\_\_\_

Mailing Address: \_\_\_\_\_ City/State/ZIP: \_\_\_\_\_

County: \_\_\_\_\_ Phone: \_\_\_\_\_ Fax: \_\_\_\_\_

Visit Date: \_\_\_\_\_ Arrival Time: \_\_\_\_\_ Departure Time: \_\_\_\_\_

Grade Level: \_\_\_\_\_ Number of Students: \_\_\_\_\_ Number of Faculty: \_\_\_\_\_ Number of Bus Drivers: \_\_\_\_\_

Number of Chaperones/Adults: \_\_\_\_\_ Please Circle One: Group pays for chaperones OR Chaperones pays upon arrival

How did you hear about Flint RiverQuarium? (Circle One) Visited Before Word of Mouth TV Website Flyer/Brochure Social Media Other

See Education Resource Guide for details.

One faculty complimentary for every 10 students. If chaperones pay upon arrival, please have them arrive at least 15 minutes early. Listed rates are for 15 or more students. If your organization is located in GA and is sales tax-exempt, please provide an ST-5 form and pay with organization check or credit card. Cash payments cannot be processed with sales tax exemption. All chaperones pay the rates listed with exception of Lab classes, which they do not attend due to space and material limitations.

## Flint RiverQuarium Environmental Education Center

\$4.50 per program (+ tax)

### \_\_\_ Self-guided tour of all exhibits

#### Imagination Theater Films

- \_\_\_ Watermelon Magic (Pre-K-2nd), 38 min.
- \_\_\_ Enchanted Reef (PreK-4th), 33 min.
- \_\_\_ Micro Planet (1st-6th), 33 min.
- \_\_\_ Alligator Kingdom (4th-12th), 28 min.
- \_\_\_ Kings of Baja (6th-12th), 48 min.
- \_\_\_ Fire Ants (5th-9th), 36 min.
- \_\_\_ Plastic Paradise (9th-12th), 57 min.
- \_\_\_ Wild Pacific (4th-12th), 52 min.

### \_\_\_ Lab Programs

#### Labs Pre-K-5th Grade

- \_\_\_ Pollywogs & Puddles (Pre-K)
- \_\_\_ Amazing Animals (K)
- \_\_\_ Needs of Life (1st)
- \_\_\_ Life Cycles (2nd)
- \_\_\_ Habitats (3rd)
- \_\_\_ Water Conservation (3rd)
- \_\_\_ Food Web (4th)
- \_\_\_ Water Cycle (4th)
- \_\_\_ Classification (5th)

#### Middle School Labs

- \_\_\_ Water Quality Control
- \_\_\_ Macroinvertebrate Mayhem
- \_\_\_ What's Up with Water
- \_\_\_ Water Quality Field Day
- \_\_\_ Dissection (2-3 week's notice REQUIRED)

#### High School Labs

- \_\_\_ Water Wonders - Chemical
- \_\_\_ Water Wonders - Biological

#### All Ages

- \_\_\_ Herpetology (All Grades)

**Please schedule Labs +ONE WEEK in advance. Max. 35 students.**



# SCHOOL GROUP RESERVATION FORM

FLINT RIVERQUARIUM  
ENVIRONMENTAL EDUCATION CENTER

Thronateeska Heritage Center \$4.50 per program (+ tax)

## Programs

- Standard School Package  
*Includes 30 minutes in science museum, one planetarium show or lab (please check one), & a 15-minute live presentation "The Sky tonight"*
- History & Mapping Program (5th grade+)

## Labs Pre-K-5th Grade

- Pollywogs & Puddles (Pre-K)
- Day vs. Night (K)
- Weather with FOX 31 (1st)
- THC Rocks (3rd)
- Earth, Moon, & Sun (4th)
- It's Electric (5th)

## Planetarium Shows

(all approximately 30 min.)

- Season of Light (All)
- Molecularium (Pre-K-2nd)
- Earth, Moon, & Sun (3rd-6th)
- Astronomyths (3rd+)
- Two Small Pieces of Glass (3rd+)
- Oasis in Space (3rd+)
- Black Holes (6th+)
- From Earth to the Universe (6th+)
- Fractal Explorations (9th+)

Thronateeska & Flint RiverQuarium Combo \$9.00 per program (+ tax)

Includes one program at each location.  
Please select one choice from the Thronateeska list  
and another from the Flint RiverQuarium list.

## Optional Add-Ons to Enhance your Visit

### IMPORTANT

Please preorder Flint Packs/Souvenir Sacks by returning this form or contacting us.  
Orders MUST be received at least one week before your scheduled reservation to better accommodate you.  
You can pick up your Flint Packs and/or Souvenir Sacks at the end of your visit in the Flint Riverquarium Gift Shop.

- Flint Pack (Flint RiverQuarium) \$2.00 (+ tax) Number ordered \_\_\_\_\_  
Appropriate for ages 5-9
- Souvenir Sack (Thronateeska) \$2.00 (+ tax) Number ordered \_\_\_\_\_  
Appropriate for ages 5-9
- Imagination Theater Concessions (Flint RiverQuarium) \$3.50 (+ tax) Number ordered \_\_\_\_\_  
Choice of one drink + one candy  
Please indicate quantity of each drink choice below:
- Juice (10 oz.)       Dasani Water (20 oz.)       Coke Product Soft Drink (20 oz.)

PLEASE NOTE: We do not have an eating facility on-site.  
If you bring your lunches, please arrange to eat at Riverfront Park adjacent to the Flint RiverQuarium.

# POLICIES & PROCEDURES

**On days when many groups are scheduled, those who arrive promptly will be given program priority. If your group is going to arrive later than the scheduled time, please call. Flint RiverQuarium 229-639-2650 or Thronateeska 229-432-6955**

## **Cancellation**

- ◆ If a cancellation must be made quickly, please call 229-639-2650 (RiverQuarium) or 229-432-6955 (Thronateeska).
- ◆ We prefer one week advance notice for cancellation prior to your reservation time.
- ◆ Programs are held rain or shine. Weather and time of year will not affect your experience.
- ◆ Field trips will only be cancelled by the facilitator in extreme circumstances. In these instances, staff will contact your group directly to reschedule.

## **Guidelines** *Students are expected to comply with all rules and regulations listed.*

- ◆ Food, gum, and drinks are not allowed in exhibit halls.
- ◆ To avoid injury, running is discouraged in the facilities.
- ◆ School Representatives remain with students at all times and are responsible for controlling student behavior.
- ◆ Students and chaperones are expected to follow directions given by Flint RiverQuarium and Thronateeska staff.
- ◆ For your safety, touching animals is prohibited unless instructed by facility staff or trained volunteers and interns.
- ◆ Since animals can be sensitive to noises, please do not tap on the glass and exhibit walls.
- ◆ Please leave book bags on the bus. This prevents personal items from accidentally being left behind.

## **Gift Shops**

- ◆ We offer merchandise ranging in prices from \$0.50 to \$100.00.
- ◆ Teachers/chaperones are responsible for student behavior and must accompany their students into the shops.

## **Imagination Theater/Wetherbee Planetarium**

- ◆ No gum, outside food or drinks allowed in the Imagination Theatre or in the Wetherbee Planetarium.
- ◆ Use of electronic or recording devices of any kind is prohibited during the presentation(s).
- ◆ Once the show starts, we ask you do not exit the theater unless it is an emergency situation.
- ◆ Please keep aisles free from obstructions.
- ◆ Seating is limited in both Theater (100 seats) and Planetarium (80 seats). Please plan accordingly. Students have first priority in seating, then educators, then parents.

**If the above rules and any others set forth by our staff cannot be followed, this could be grounds for removal of individuals from the facility without a refund.**

**I have read the above guidelines with my students and accept responsibility for their behavior during our visit to the Flint RiverQuarium and Thronateeska Heritage Center. I understand my group may be asked to leave if the contract is violated. By returning this form, I agree to all above stated policies and procedures.**

Name (please print) \_\_\_\_\_

Organization (please print) \_\_\_\_\_

Signature \_\_\_\_\_ Date \_\_\_\_\_

# PHOTO RELEASE WAIVER

FLINT RIVER  QUARIUM  
ENVIRONMENTAL EDUCATION CENTER

**Please only sign below if you know that all of your students are allowed to be photographed. This “all or nothing” policy makes it easier for us to know if students from your class can be photographed for promotional purposes. There is also an additional line stating that we are allowed to acknowledge which school is being photographed. We will not publish the child’s name without direct permission from their parent/guardian.**

I hereby grant the Flint RiverQuarium and/or Thronateeska Heritage Center personnel permission to use my likeness in a photograph, video or other digital media (“photo”) in any and all of its publications, including web-based publications, without payment or consideration.

I understand and agree that all photos will become property of the Flint RiverQuarium and/or Thronateeska Heritage Center and will not be returned.

I hereby irrevocably authorize the Flint RiverQuarium and/or Thronateeska Heritage Center to edit, copy, exhibit, publish or distribute these photos for any lawful purpose. In addition, I waive any right to inspect or approve the finished product wherein my likeness appears. Additionally, I waive any right to royalties or other compensation arising or related to the use of the photo.

I hereby hold harmless, release and forever discharge the Flint RiverQuarium and/or Thronateeska Heritage Center from all claims, demands and causes of action which I, my heirs, representations, executors, administrators or any other persons acting on my behalf or on behalf of my estate have or may have by reason of this authorization.

**I have read and understand the above Photo Release. I affirm that I am at least 18 years of age and that I have obtained the required consent (from parents/guardians) for ALL of those in my group who are under 18 years of age. This is evidenced by my signature below.**

Name (please print) \_\_\_\_\_

Signature \_\_\_\_\_ Date \_\_\_\_\_

**I also release permission to the Flint RiverQuarium and/or Thronateeska Heritage Center to denote the name of my school in conjunction with any photos used from our visit.**

Name (please print) \_\_\_\_\_

Signature \_\_\_\_\_ Date \_\_\_\_\_



# FLINT RIVER QUARIUM

ENVIRONMENTAL EDUCATION CENTER

## LUNCH OPTIONS

If you decide to bring your lunch, please make arrangements to eat lunch adjacent to our facility in Riverfront Park or Turtle Grove Park. The Flint RiverQuarium is not equipped to provide an indoor lunch space for school groups. You can also pre-order lunch through Chick-Fil-A, and they will deliver lunch for your group to our facility. They request a two-week notice. Please contact Albany Chick-Fil-A catering at 229-869-5244 for more information or to place your order.

**The Flint RiverQuarium DOES NOT accept Chick-Fil-A orders.**

### WE CATER FOR KIDS



#### 6 Piece Kid's Meal \$5.00

Includes: Chick-fil-A® Chicken Nuggets,  
Waffle Chips, Juice Box & Kid's Toy

Order Online: [www.chick-fil-a.com/albanysquare](http://www.chick-fil-a.com/albanysquare)  
Delivery with \$150 Minimum Order



**catering** Michelle Page: 229.869.5244

TRAYS FOR ANY OCCASION

### Can't Catch a Break? We Deliver.



#### SACK LUNCH SPECIAL \$8.00

Your choice of Chick-fil-A Chicken Sandwich or 8ct  
Nuggets, Waffle Potato Chips & DASANI Bottled Water.  
Add Chocolate Chunk Cookie \$1.00.

Order Online: [www.chick-fil-a.com/albanysquare](http://www.chick-fil-a.com/albanysquare)  
Delivery with \$150 Minimum Order



**catering** Michelle Page: 229.869.5244

TRAYS FOR ANY OCCASION